

STANDARD DEPARTURE CHART
INSTRUMENT (SID) - ICAO

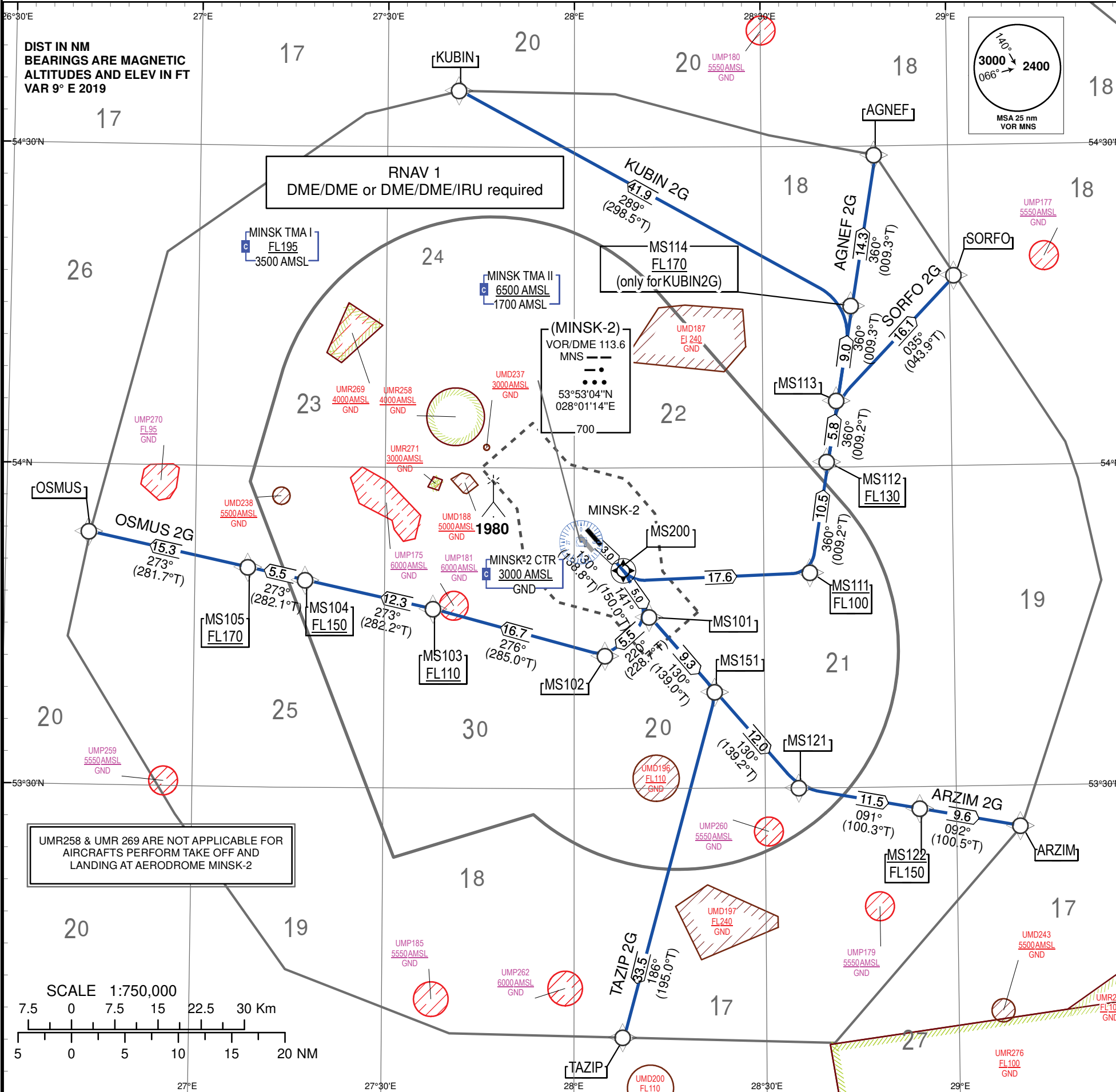
TRANSITION ALTITUDE
6000

Alt set: - hPa (mm on req)
-QNH (QFE on req)

MINSK APP	125.900
MINSK RADAR	125.250
MINSK TOWER	130.400 PRI 118.300 SRY
MINSK-2 ATIS	128.850 EN 135.850 RUS

MINSK-2
RNAV RWY13L

AGNEF2G, ARZIM2G
KUBIN2G, OSMUS2G
SORFO2G, TAZIP2G



RNAV 1 APPROVAL REQUIRED. OTHERWISE ADVISE ATC.
EXPECT DIRECT ROUTING/SHORTCUTS BY ATC WHENEVER POSSIBLE (ESPECIALLY DURING OFF-PEAK HOURS, SEE GEN 4.1 POINT 8).

INITIAL CLIMB
CLIMB AND MAINTAIN 6000 FT.
CLIMB TO A HIGHER LEVEL ONLY WHEN CLEARED BY ATC.

THE MINIMUM CLIMB GRADIENTS ARE AS FOLLOWS
(REQUIRED FOR SEPARATION REASONS):
- 5.7% FOR SID OSMUS 2G UP TO FL 170;
- 6.5% FOR SID AGNEF 2G, SORFO 2G UP TO FL 130.
- 6.5% FOR SID KUBIN 2G, UP TO FL 170.

WARNING
IF UNABLE TO COMPLY PDG REPORT AT FIRST CONTACT WITH MINSK GND.

RADIO COMMUNICATION FAILURE PROCEDURE
SET TRANSPONDER TO 7600.
IF AVAILABLE CALL TELEPHONE NUMBER +375172157600.
ATTEMPT TO LAND AT THE AERODROME OF DEPARTURE.
IF UNABLE TO LAND AT THE AERODROME OF DEPARTURE:
CONTINUE ASSIGNED AND ACKNOWLEDGED SID;
AFTER REACHING THE LAST ASSIGNED FLIGHT LEVEL, CONTINUE FURTHER CLIMB TO FPL FLIGHT LEVEL IN 3 MINUTES.

IF BEING VECTORED
SET TRANSPONDER TO 7600.
CONTINUE ON ASSIGNED HEADING AND FLIGHT LEVEL FOR 3 MINUTES, THEN PROCEED DIRECT TO FINAL SID POINT, CLIMBING TO FPL FLIGHT LEVEL.

CHANGE: ADD symbol VOR/DME MNS.

TABULAR DESCRIPTION

AGNEF2G										
Serial Number	Path Descriptor	Waypoint Identifier	Fly - over	Course °M(°T)	Magnetic Variation(°)	Distance NM	Turn Direction	Altitude FT	Speed KT	Navigation Specification
001	CF	MS200	Y	130(138.8)	9	3.0	-	-	-210	RNAV1
002	DF	MS111	-	-	9	17.6	-	-FL100	-	RNAV1
003	TF	MS112	-	360(009.2)	9	10.5	-	+FL130	-250	RNAV1
004	TF	MS113	-	360(009.2)	9	5.8	-	-	-	RNAV1
005	TF	MS114	-	360(009.3)	9	9.0	-	-	-	RNAV1
006	TF	AGNEF	-	360(009.3)	9	14.3	-	-	-	RNAV1
ARZIM2G										
Serial Number	Path Descriptor	Waypoint Identifier	Fly - over	Course °M(°T)	Magnetic Variation(°)	Distance NM	Turn Direction	Altitude FT	Speed KT	Navigation Specification
001	CF	MS200	Y	130(138.8)	9	3.0	-	-	-210	RNAV1
002	TF	MS101	-	141(150)	9	5.0	-	-	-	RNAV1
003	TF	MS151	-	130(139.0)	9	9.3	-	-	-250	RNAV1
004	TF	MS121	-	130(139.2)	9	12.0	-	-	-	RNAV1
005	TF	MS122	-	091(100.3)	9	11.5	-	-FL150	-	RNAV1
006	TF	ARZIM	-	092(100.5)	9	9.6	-	-	-	RNAV1
KUBIN2G										
Serial Number	Path Descriptor	Waypoint Identifier	Fly - over	Course °M(°T)	Magnetic Variation(°)	Distance NM	Turn Direction	Altitude FT	Speed KT	Navigation Specification
001	CF	MS200	Y	130(138.8)	9	3.0	-	-	-210	RNAV1
002	DF	MS111	-	-	9	17.6	-	-FL100	-	RNAV1
003	TF	MS112	-	360(009.2)	9	10.5	-	+FL130	-250	RNAV1
004	TF	MS113	-	360(009.2)	9	5.8	-	-	-	RNAV1
005	TF	MS114	-	360(009.3)	9	9.0	-	+FL170	-	RNAV1
006	TF	KUBIN	-	289(298.5)	9	41.9	-	-	-	RNAV1
OSMUS2G										
Serial Number	Path Descriptor	Waypoint Identifier	Fly - over	Course °M(°T)	Magnetic Variation(°)	Distance NM	Turn Direction	Altitude FT	Speed KT	Navigation Specification
001	CF	MS200	Y	130(138.8)	9	3.0	-	-	-210	RNAV1
002	TF	MS101	-	141 (150.0)	9	5.0	-	-	-	RNAV1
003	TF	MS102	-	220(228.7)	9	5.5	-	-	-	RNAV1
004	TF	MS103	-	276(285.0)	9	16.7	-	+FL110	-250	RNAV1
005	TF	MS104	-	273(282.2)	9	12.3	-	+FL150	-	RNAV1
006	TF	MS105	-	273(282.1)	9	5.5	-	+FL170	-	RNAV1
007	TF	OSMUS	-	273(281.7)	9	15.3	-	-	-	RNAV1
SORFO2G										
Serial Number	Path Descriptor	Waypoint Identifier	Fly - over	Course °M(°T)	Magnetic Variation(°)	Distance NM	Turn Direction	Altitude FT	Speed KT	Navigation Specification
001	CF	MS200	Y	130(138.8)	9	3.0	-	-	-210	RNAV1
002	DF	MS111	-	-	9	17.6	-	-FL100	-	RNAV1
003	TF	MS112	-	360(009.2)	9	10.5	-	+FL130	-250	RNAV1
004	TF	MS113	-	360(009.2)	9	5.8	-	-	-	RNAV1
005	TF	SORFO	-	035(043.9)	9	16.1	-	-	-	RNAV1
TAZIP2G										
Serial Number	Path Descriptor	Waypoint Identifier	Fly - over	Course °M(°T)	Magnetic Variation(°)	Distance NM	Turn Direction	Altitude FT	Speed KT	Navigation Specification
001	CF	MS200	Y	130(138.8)	9	3.0	-	-	-210	RNAV1
002	TF	MS101	-	141 (150.0)	9	5.0	-	-	-	RNAV1
003	TF	MS151	-	130(139.0)	9	9.3	-	-	-250	RNAV1
004	TF	TAZIP	-	186(195.0)	9	33.5	-	-	-	RNAV1

STANDARD DEPARTURE CHART
INSTRUMENT (SID) – ICAO

WAYPOINT LIST

Waypoint Identifier	Coordinates	
AGNEF	542909.0N	0284822.0E
ARZIM	532614.0N	0291013.0E
KUBIN	543517.0N	0274141.0E
MS101	534602.2N	0281204.4E
MS102	534224.9N	0280506.4E
MS103	534646.4N	0273757.1E
MS104	534923.5N	0271740.5E
MS105	535032.7N	0270835.8E
MS111	535007.9N	0283732.2E
MS112	540029.0N	0284022.5E
MS113	540612.0N	0284157.2E
MS114	541504.2N	0284425.0E
MS121	532959.0N	0283532.2E
MS122	532757.4N	0285429.2E
MS151	533901.0N	0282223.0E
MS200	535024.0N	0280748.4E
OSMUS	535341.0N	0264321.0E
SORFO	541749.0N	0290055.0E
TAZIP	530643.0N	0280749.0E

THIS PAGE INTENTIONALLY LEFT BLANK